

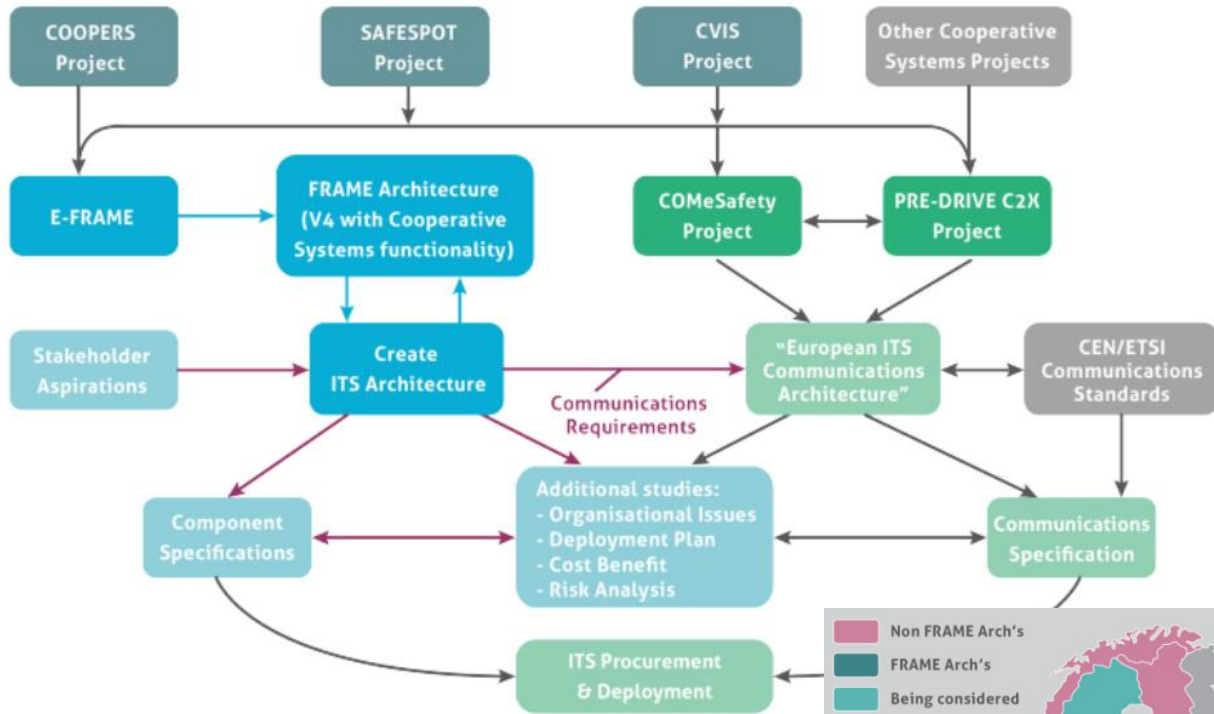
WWW's of European ITS Framework Architecture: what, why, where...?

ITS Architectures can be created at European, national, regional or city level, or relate to specific sectors or services. Or for projects:

What is ITS?

"Intelligent Transport Systems = control/ information systems that use integrated communications and data processing technologies for the purposes of improving the mobility of people and goods, increasing safety, reducing traffic congestion and managing incidents effectively, meeting transport policy goals and objectives – such as demand management or public transport priority measures."

definition from PIARC



What (and why) is ITS Architecture?

An ITS architecture is the conceptual design that defines the structure and/or behavior of an integrated Intelligent Transport System (ITS).

Other words it is a set of high level views that enable plans to be made for integrating ITS applications and services. It normally covers technical aspects, plus the related organisational, legal and business issues.

IT helps to ensure that the resulting ITS deployment:

- can be planned in a logical manner.
- integrates successfully with other systems.
- meets the desired performance levels.
- has the desired behaviour.
- is easy to manage.
- is easy to maintain.
- is easy to extend.
- satisfies the expectations of the users.

It is MANDATORY to use? NO. But useful.

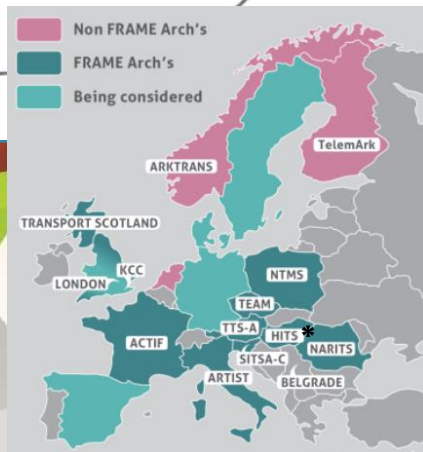
Definition and data from: FRAME site

Source of the diagram: <https://frame-online.eu/2023/01/30/cooperative-systems-activities/>

USE of FRAME in Europe:

FRAME (European ITS Framework Architecture): frame-online.eu

* HITS (Hungarian ITS Framework Architecture) available just with archive data: frame-online.hu



Nations/Cities involved with FRAME

