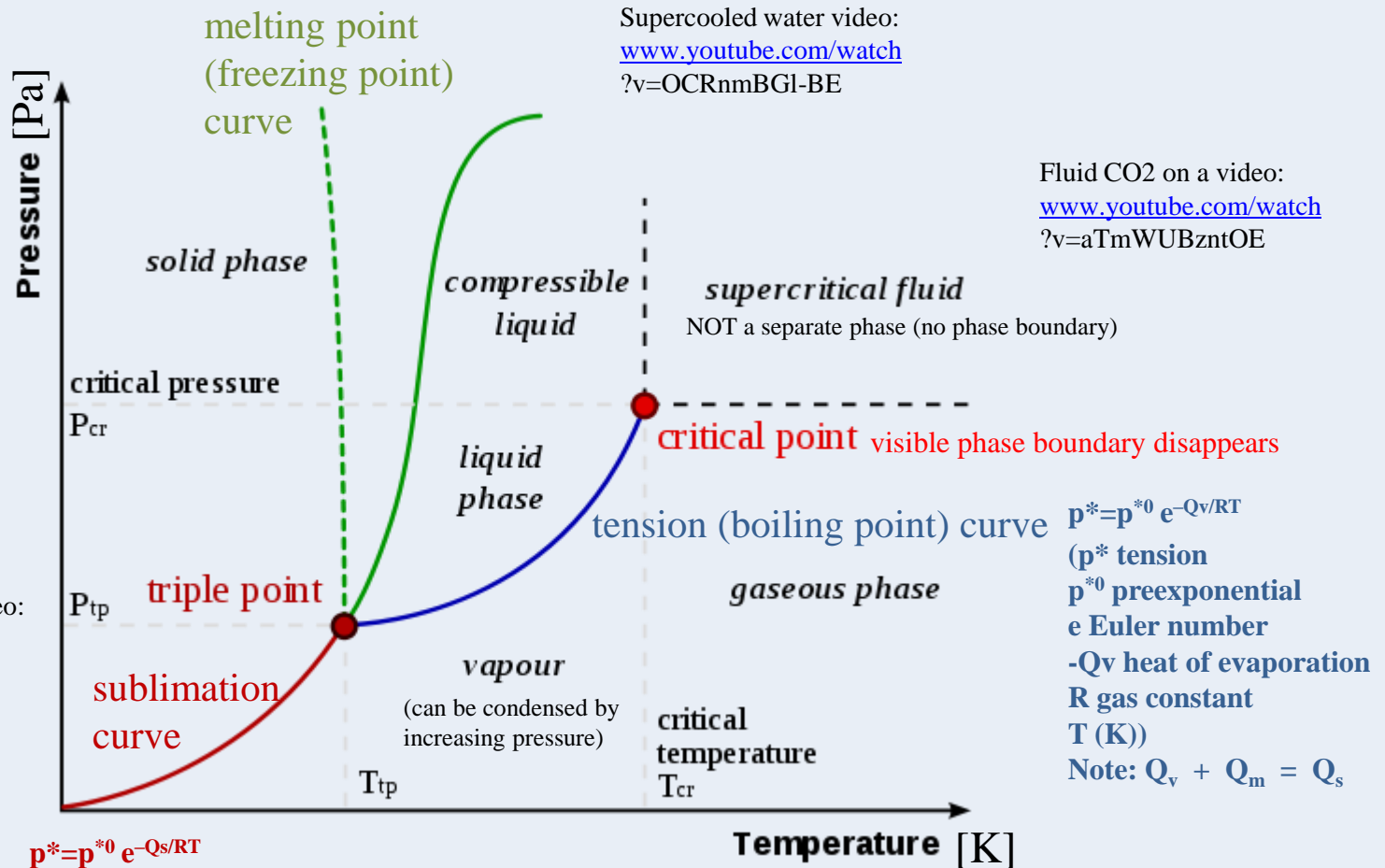


Pure substance (one component) phase diagram in equilibrium state



Worlds lightest solid video
www.youtube.com/watch?v=AeJ9q45PfD0

Triple point of water on a video:
www.youtube.com/watch?v=Juz9pVVsmQQ



Permanent gas: critical temperature T_{cr} is below RT
 Thus, the gas in the cylinder is in gaseous phase
 eg. N_2 , O_2 , H_2 , He

Non-permanent gas: critical temperature T_{cr} is over RT
 $p = \text{tension}$ (at room temperature):
 eg. Propane-butane, Cl_2 , CO_2